

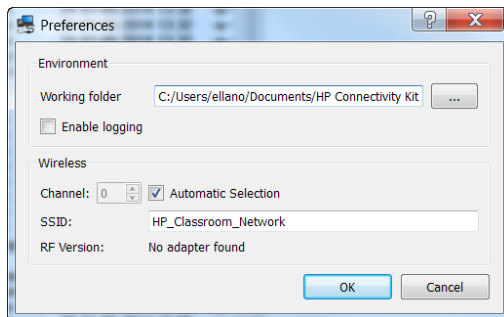
## Description

Moon is a small program to calculate and display the moon phases. It uses a simple drawing routine to represent an approximation of the moon's phase and add some speckles to simulate stars.

## How to install the program

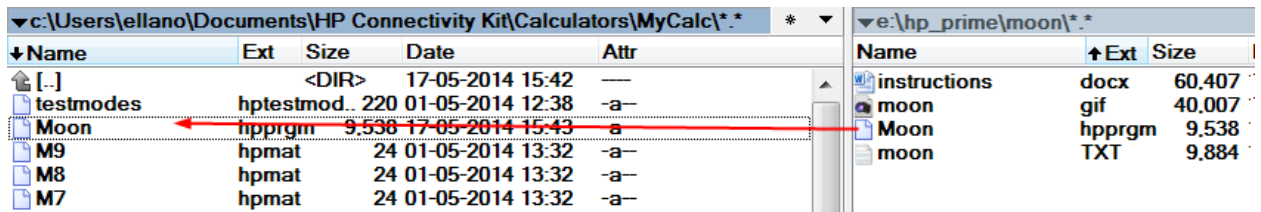
This is the procedure I follow using the using the **HP Connectivity Kit**:

1. Connect your calculator to your PC using the USB cable provided with it. If this is the 1<sup>st</sup> time, wait until the drivers are installed and restart your PC.
2. Install and open the **HP connectivity Kit**.
3. Check for the working folder under **Edit** → **Preferences**:

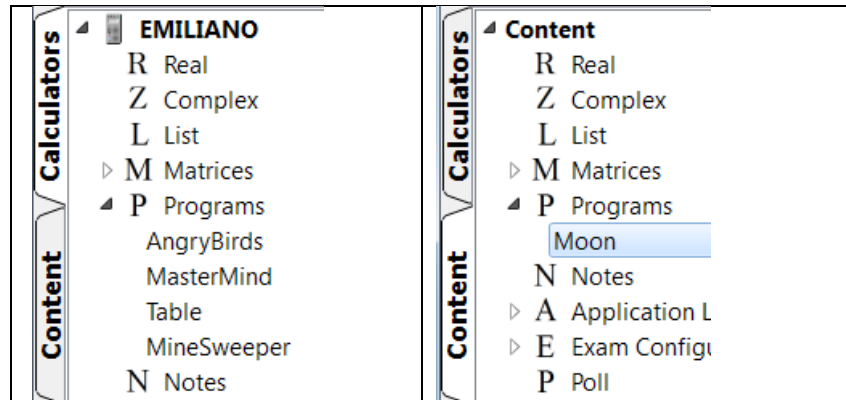


Close the **HP Connectivity Kit**.

4. Open the same folder using Windows Explorer (I use **Total Commander**), add `\Calculators\MyCalc\` to the path (usually `C:\Users\<your name>\Documents\HP Connectivity\`), and copy the program there (**moon.hpprgm**)

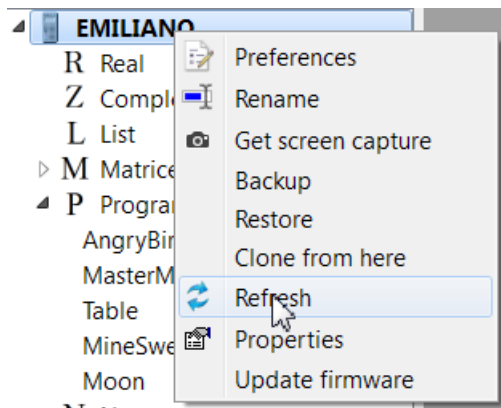


5. Re-open the **HP Connectivity Kit**.
6. Under the **Calculators** tab you should see your calculator, and under the **Content** → **Programs** you should see **Moon** as in the following image:

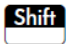



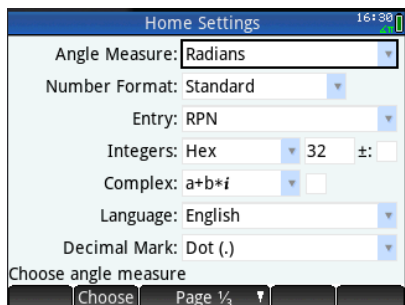
7. Right click **Moon** and select **Send to class: (All)**
8. You will see a progress bar at the bottom part of the screen.


If you change to the **Calculator**→**Programs** tab, the **Moon** program should already be there ready for your use (right click the calculator's name and use **Refresh** if you do not see it or restart the **HP Connectivity Kit**).




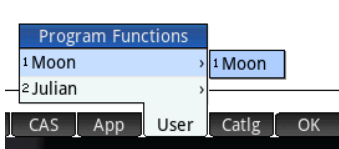
## How to use the program

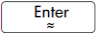
1. Before you begin be sure that the angle measure is set to radians and not degrees:
  - a) Press   to open the **Home Settings** and, if necessary, change the **Angle measure** to **Radians**.

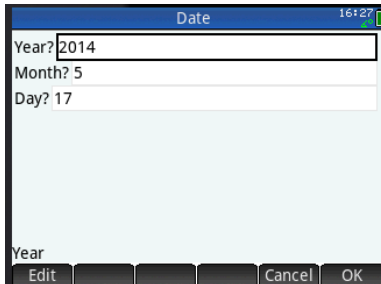



- b) Press  again to exit the **Home Settings** menu.

2. Press  and tap **User**.
3. Select **Moon** from the list.

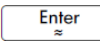


4. Tap  and the program executes, displaying a message box and then asking for the date. There is no provision for verifying the validity of this data. The calculator's date is used as the default.



5. If you accept the values, tap  once more. The moon phase is displayed along with its age and illumination value.



6. Tap  to return to the home screen.